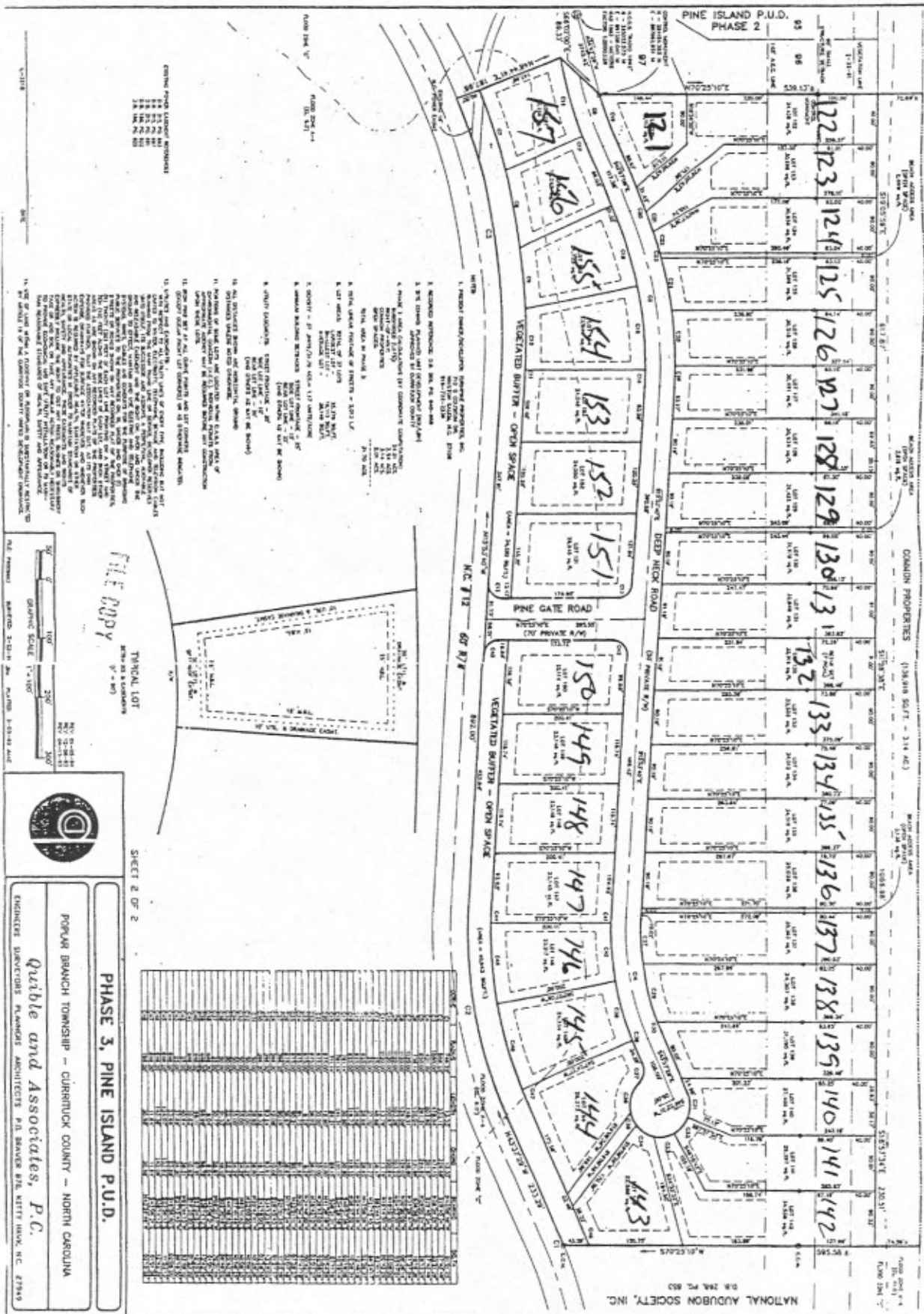


2

ATLANTIC OCEAN



EXISTING PINE ISLAND P.U.D. MINIMUMS

MIN. LOT AREA: 10,000 SQ. FT.

MIN. FRONT SETBACK: 10 FT.

MIN. SIDE SETBACK: 5 FT.

MIN. REAR SETBACK: 5 FT.

MIN. FRONT YARD WIDTH: 10 FT.

MIN. SIDE YARD WIDTH: 5 FT.

MIN. REAR YARD WIDTH: 5 FT.

MIN. FRONT SETBACK: 10 FT.

MIN. SIDE SETBACK: 5 FT.

MIN. REAR SETBACK: 5 FT.

MIN. FRONT YARD WIDTH: 10 FT.

MIN. SIDE YARD WIDTH: 5 FT.

MIN. REAR YARD WIDTH: 5 FT.

1. MINIMUM FRONT/REAR/SIDE SETBACKS: 10 FT. / 5 FT. / 5 FT.
2. 5 FT. MINIMUM FRONT/REAR/SIDE SETBACKS (SEE PLAN FOR DETAILS)
3. MINIMUM FRONT/REAR/SIDE SETBACKS (SEE PLAN FOR DETAILS)
4. MINIMUM FRONT/REAR/SIDE SETBACKS (SEE PLAN FOR DETAILS)
5. MINIMUM FRONT/REAR/SIDE SETBACKS (SEE PLAN FOR DETAILS)
6. MINIMUM FRONT/REAR/SIDE SETBACKS (SEE PLAN FOR DETAILS)
7. MINIMUM FRONT/REAR/SIDE SETBACKS (SEE PLAN FOR DETAILS)
8. MINIMUM FRONT/REAR/SIDE SETBACKS (SEE PLAN FOR DETAILS)
9. MINIMUM FRONT/REAR/SIDE SETBACKS (SEE PLAN FOR DETAILS)
10. MINIMUM FRONT/REAR/SIDE SETBACKS (SEE PLAN FOR DETAILS)
11. MINIMUM FRONT/REAR/SIDE SETBACKS (SEE PLAN FOR DETAILS)
12. MINIMUM FRONT/REAR/SIDE SETBACKS (SEE PLAN FOR DETAILS)
13. MINIMUM FRONT/REAR/SIDE SETBACKS (SEE PLAN FOR DETAILS)
14. MINIMUM FRONT/REAR/SIDE SETBACKS (SEE PLAN FOR DETAILS)
15. MINIMUM FRONT/REAR/SIDE SETBACKS (SEE PLAN FOR DETAILS)



PHASE 3, PINE ISLAND P.U.D.

FOR PINE BEACH TOWNSHIP - CURRERTUCK COUNTY - NORTH CAROLINA

Quible and Associates, P.C.

ENGINEER SURVEYORS PLANNERS ARCHITECTS P.O. BOX 878 KITTER HOOK, NC 27849

NOV 2004

NOV 2005

M.W. 2-17-82

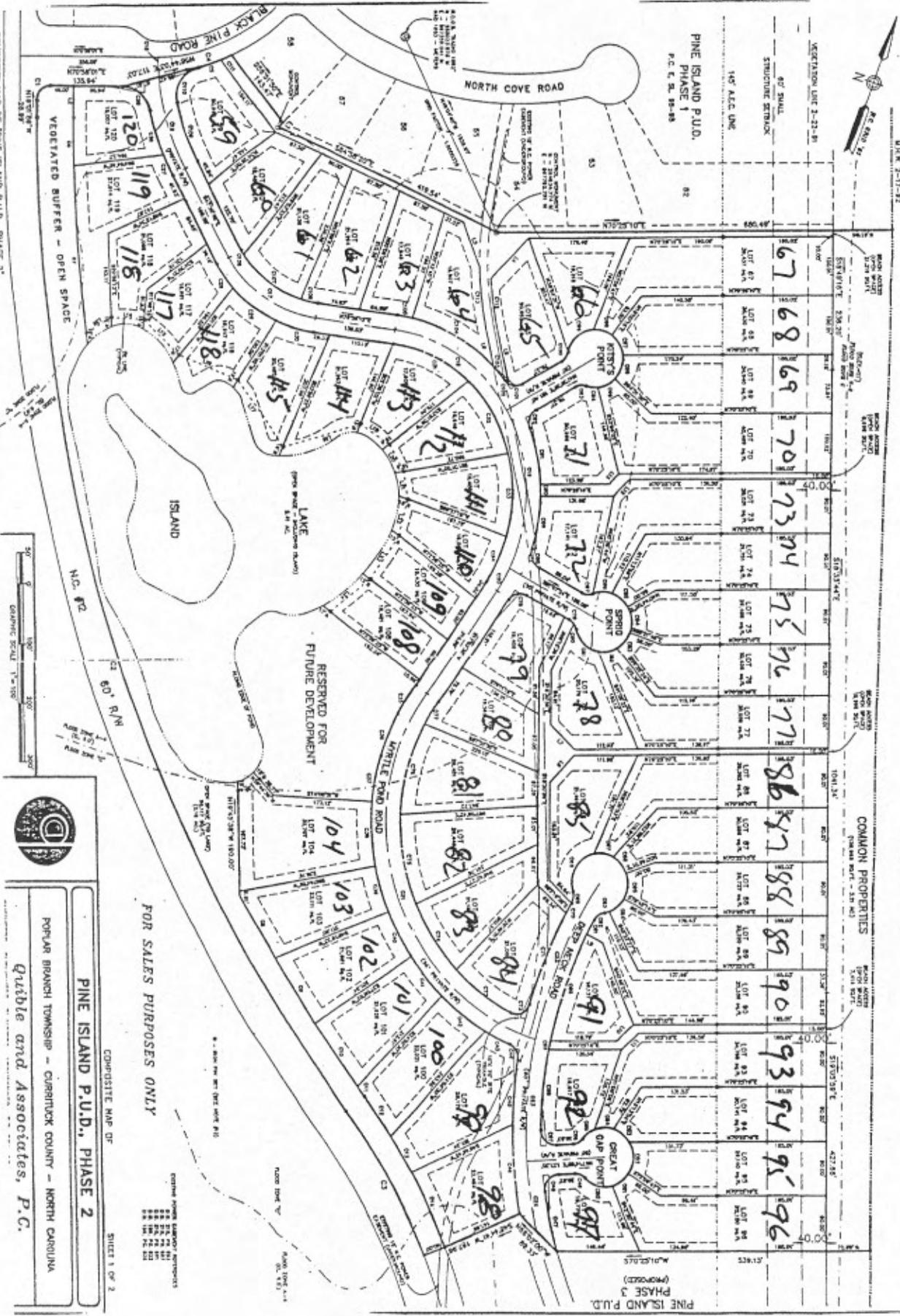


ATLANTIC OCEAN

COMMON PROPERTIES
(PINE ISLAND P.U.D. - 25 AC)

PINE ISLAND P.U.D.
PHASE 1
P.C. C. B. 88-88

PINE ISLAND P.U.D.
PHASE 2
(PROPOSED)



COMPOSITE MAP OF PINE ISLAND P.U.D., PHASE 2

GRAPHIC SCALE 1" = 100'



FOR SALES PURPOSES ONLY

COMPOSITE MAP OF
PINE ISLAND P.U.D., PHASE 2
POPULAR BRANCH TOWNSHIP - CURRANTUCK COUNTY - NORTH CAROLINA
Quible and Associates, P.C.

SHEET 1 OF 2